

# MaxiMist SprayMate Pro HVLP TANNING SYSTEM



## **DO NOT USE EQUIPMENT BEFORE READING THIS MANUAL**

This manual contains important warnings and instructions. Please read these instructions carefully and keep for your reference.

### MaxiMist SprayMate Pro Instruction Manual

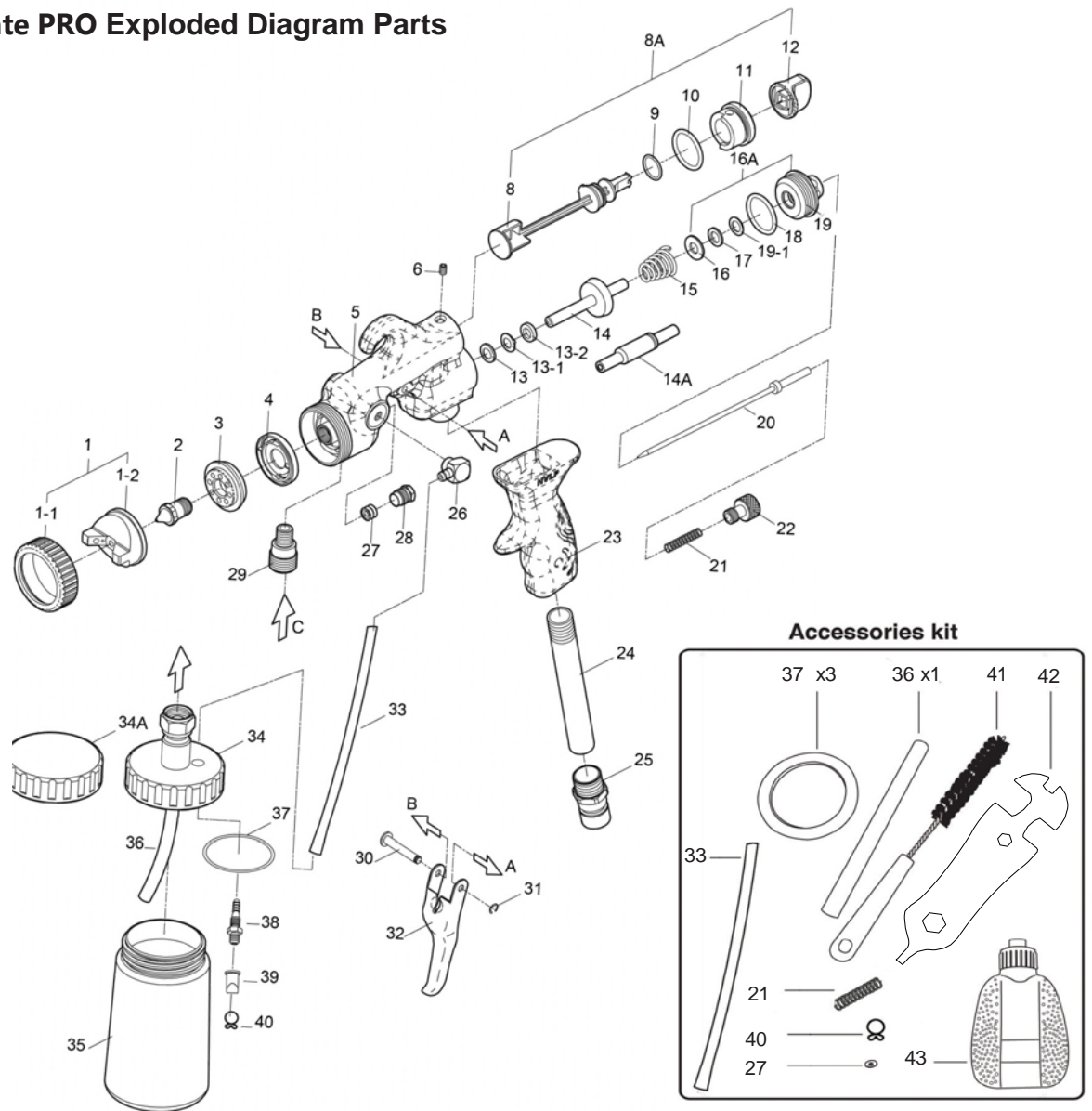
Congratulations on purchasing your MaxiMist SprayMate Pro. This product has been specially designed to provide an efficient application of tanning solution products.

Take a few minutes to read and understand how to operate your new MaxiMist SprayMate Pro and you will be able to provide the perfect flawless tan with every application.

Your MaxiMist SprayMate Pro is packaged with the following:

1. MaxiMist Pro Series Spray Gun
2. MaxiMist SprayMate Pro Turbine and Hose
3. Instruction Manual
4. 3 extra cups with lids
5. Tune-up kit includes:
  - Duck Bill Assembly
  - Gland Seal (1 pcs)
  - Cup Gasket (3 pcs)
  - Pick-up Tube assembly
  - Brush
  - Spanner/ Wrench
  - Gun Lube

# MaxiMist SprayMate PRO Exploded Diagram Parts



| No.   | Part No.      | Description                | Quantity |
|-------|---------------|----------------------------|----------|
| 1.    | ST301PRO-1    | Air Cap Set                | 1        |
| 1-1.  | ST301PRO-1-1  | Air Cap Ring               | 1        |
| 1-2.  | ST301PRO-1-2  | Air Cap                    | 1        |
| 2.    | ST301PRO-2    | Fluid Nozzle               | 1        |
| 3.    | ST301PRO-3    | Distributor (Aluminum)     | 1        |
| 4.    | ST301PRO-4    | Distributor (Plastic)      | 1        |
| 5.    | ST301PRO-5    | Gun Body                   | 1        |
| 6.    | ST301PRO-6    | Screw                      | 1        |
| 8A.   | ST301PRO-8A   | Pattern Adjusting Assembly | 1        |
| 8.    | ST301PRO-8    | Pattern Adjusting Shaft    | 1        |
| 9.    | ST301PRO-9    | O-ring                     | 1        |
| 10.   | ST301PRO-10   | O-ring                     | 1        |
| 11.   | ST301PRO-11   | Seat                       | 1        |
| 12.   | ST301PRO-12   | Air Adjusting Knob         | 1        |
| 13.   | ST301PRO-13   | Washer                     | 1        |
| 13-1. | ST301PRO-13-1 | Gasket                     | 1        |
| 13-2. | ST301PRO-13-2 | Gasket                     | 1        |
| 14.   | ST301PRO-14   | Valve Set                  | 1        |
| 14A.  | ST301PRO-14A  | Valve Set (Bleeder Type)   | 1        |
| 15.   | ST301PRO-15   | Spring                     | 1        |
| 16A.  | ST301PRO-16A  | Gasket Assembly            | 1        |
| 16.   | ST301PRO-16   | Gasket                     | 1        |
| 17.   | ST301PRO-17   | Gasket                     | 1        |
| 18.   | ST301PRO-18   | O-ring                     | 1        |
| 19.   | ST301PRO-19   | Bushing                    | 1        |
| 19-1. | ST301PRO-19-1 | Gasket                     | 1        |
| 20.   | ST301PRO-20   | Needle Assembly            | 1        |
| 21.   | ST301PRO-21   | Spring                     | 1        |
| 22.   | ST301PRO-22   | Fluid Adjusting Knob       | 1        |
| 23.   | ST301PRO-23   | Handle (Plastic)           | 1        |

| No.                    | Part No.     | Description     | Quantity |
|------------------------|--------------|-----------------|----------|
| 24.                    | ST301PRO-24  | Tube            | 1        |
| 25.                    | ST301PRO-25  | Connector       | 1        |
| 26.                    | ST301PRO-26  | "L" Fitting     | 1        |
| 27.                    | ST301PRO-27  | Seal            | 1        |
| 28.                    | ST301PRO-28  | Seal Nut        | 1        |
| 29.                    | ST301PRO-29  | Fluid Inlet     | 1        |
| 30.                    | ST301PRO-30  | Pin             | 1        |
| 31.                    | ST301PRO-31  | E-Ring          | 1        |
| 32.                    | ST301PRO-32  | Trigger         | 1        |
| 33.                    | ST301PRO-33  | Tube            | 1        |
| 34.                    | ST301PRO-34  | Lid Assembly    | 1        |
| 34A.                   | ST301PRO-34A | Lid             | 1        |
| 35.                    | ST301PRO-35  | Cup             | 1        |
| 36.                    | ST301PRO-36  | Fluid Tube      | 1        |
| 37.                    | ST301PRO-37  | Gasket          | 1        |
| 38.                    | ST301PRO-38  | Connector       | 1        |
| 39.                    | ST301PRO-39  | Duck Bill       | 1        |
| <b>Accessories kit</b> |              |                 |          |
| No.                    | Part No      | Description     | Quantity |
| 21.                    | ST301PRO-21  | Spring          | 1        |
| 27.                    | ST301PRO-27  | Seal            | 1        |
| 33.                    | ST301PRO-33  | Tube            | 1        |
| 36.                    | ST301PRO-36  | Fluid Tube      | 1        |
| 37.                    | ST301PRO-37  | Gasket          | 3        |
| 40.                    | ST301PRO-40  | Clamp           | 1        |
| 41.                    | ST301PRO-41  | Brush           | 1        |
| 42.                    | ST301PRO-42  | Spanner/ wrench | 1        |
| 43.                    | ST301PRO-43  | Gun lube        | 1        |

## Preparing your equipment for use

Your tanning equipment is supplied as two main components, the motor unit with hose, and the spray gun. Please refer to the exploded view on page 2 and follow the simple instructions below:

- Unscrew the Cup (35) from the spray gun and fill with tanning solution. Do not overfill the Cup. Normally 2oz (50ml) of solution is enough for one application.
- Make sure the Fluid Tube (36) is pushed firmly into the lid of the spray gun.
- Carefully screw the Cup back onto the lid of the spray gun **by holding the spray gun at the lid area, not by the handle. This will ensure an airtight seal.**
- Uncoil the power cord from the base of the motor unit and insert the plug into a suitable electrical socket-outlet.
- Next, position the motor unit as far away as practically possible from the area where you will be spraying.
- Attach the female quick connect end of Air Hose (44) to the male connection on the spray gun.
- Insert hose into motor air outlet firmly with a slight twist - this will ensure a tight fit.

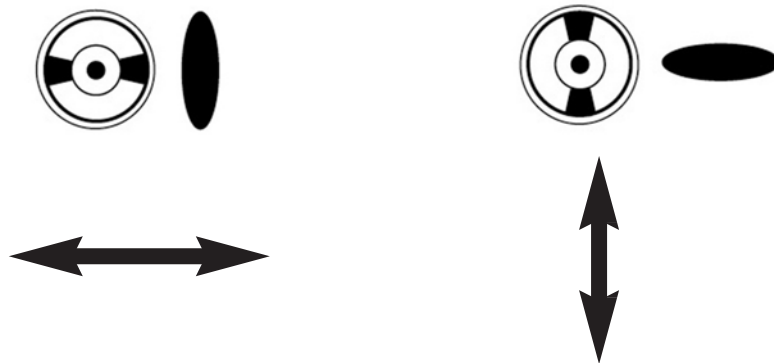
Switch on the motor unit. No tanning solution will be sprayed until you pull the spray gun trigger. Air will flow constantly as long as the motor unit is running.

**ALWAYS KEEP THE MOTOR UNIT AS FAR AWAY FROM THE SPRAYING AREA AS POSSIBLE TO PREVENT TANNING SOLUTION CONTAMINATING THE MOTOR.**

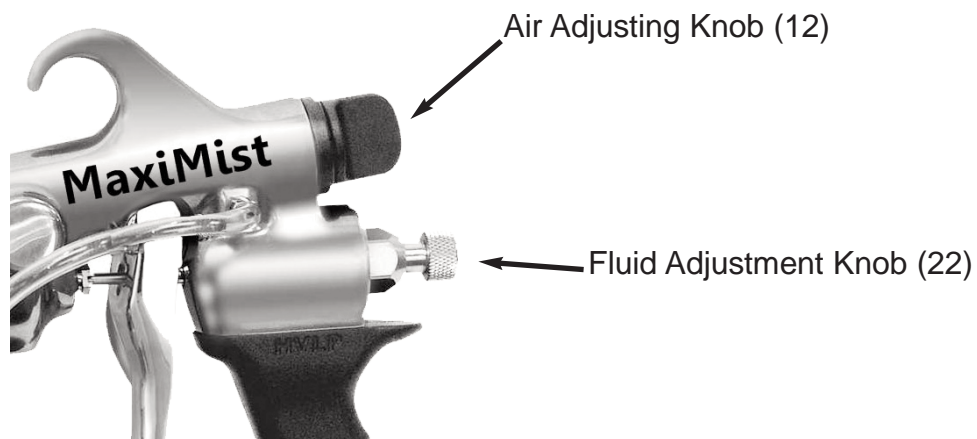
## 2. Adjusting the spray gun

### Spray patterns

- a. The MaxiMist Pro Series spray gun has three spray patterns to choose from, the most often used are a horizontal (left and right) spray pattern which is ideal for the lower body or vertical (up and down) spray pattern for upper body application. To adjust the spray pattern turn the Air Cap (1-2) at the front of the spray gun to the following position.



- b. The third spray pattern creates an “airbrush or detailed mode” which is ideal to touch up areas such as bikini lines or to enhance certain areas such as the abdominals (called sculpting or contouring). To do this turn the Air Adjusting Knob (12) at the rear of the spray gun from the 12 o’ clock position to the 3 o’ clock position.

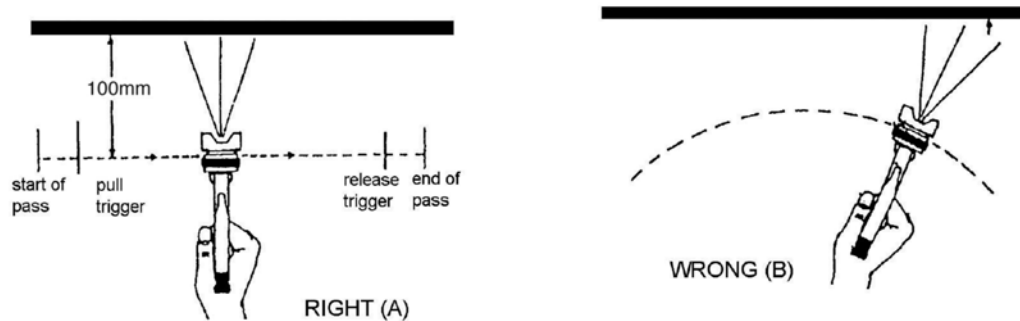


NOTE YOU MUST TURN DOWN THE FLUID ADJUSTMENT KNOB (22) TO REDUCE THE AMOUNT OF TANNING SOLUTION BEING SPRAYED TO AVOID DRIPS AND RUNS. ALSO NEVER ATTEMPT TO SPRAY AN ENTIRE BODY IN THE "AIRBRUSH" MODE SETTING.

### 3. Using your MaxiMist SprayMate Pro system

- a. The ON/OFF switch is located on the motor unit. Turn it on. You will hear a sound similar to a vacuum cleaner. You may also notice that air is now blowing out of the front of the spray gun. This is correct. Air will continually flow from the Air Cap (1-2) of the spray gun as long as the motor unit is running and the Air Hose (44) is connected.
- b. This may be the first time or hundredth time you have performed a spray tan. However it is a good idea to practice spraying onto a piece of white towel until you find the pattern and volume that is best for you. **Your goal is to adjust the flow of solution so you obtain a 4" (10cm) wide spray pattern spraying 4" (10cm) away from your target. Proper adjustments will greatly improve application and will make the difference between a great or poor application.**
- c. Open the Fluid Adjusting Knob (22) as described in 'Adjusting the spray gun' in section 2.
- d. Set the spray pattern you wish to use by adjusting the Air Cap (1-2) to the desired position.
- e. In general, hold the spray gun 4" (10cm) from the person being sprayed. Moving the spray gun back will increase the size of the mist pattern. Moving the spray gun closer will decrease the size of the mist pattern. The further away you hold the spray gun, the more you will need to increase the solution flow thus causing unwanted amounts of airborne solution (overspray).
- f. Holding the spray gun closer to the person being sprayed along with a minimum flow of solution will provide the best results, no streaks or running solution and virtually no mist in the spray area.
- g. Be sure to move the spray gun at a slow (not too slow), steady speed keeping the distance of the spray gun the same throughout the application. This will ensure perfect results. It is actually very easy. Practice a few times and you will be an expert.
- h. It is best to hold the spray gun in a vertical position when spraying. If you want to change the direction of the mist pattern, rotate the position of the Air Cap (1-2) rather than turning the spray gun on its side.
- i. Pull back on the trigger and move the spray gun (see 'PROPER SPRAYING TECHNIQUE'). DO NOT WAVE OR TILT the spray gun back and forth in front of your client by bending your wrist. Rather, keep your wrist straight and move your entire arm. Movement should be steady, even and deliberate, keeping your distance the same at all times.
- j. Always store the spray gun in a vertical position. DO NOT ROCK OR TIP.

## PROPER SPRAYING TECHNIQUE



(Remember, NO TILTING, STAY LEVEL)

### 4. Maintenance

#### 1. Air Hose

- a. Wipe the air hose daily with a damp cloth and store in a clean dry place.

#### 2. Spray Gun

- a. It is important to clean your spray gun daily.
- b. At the end of the day or when the equipment will not be used any more, disconnect the spray gun from the air hose.
- c. Carefully unscrew the Cup (35). If there is remaining solution, either close the Cup (35) with a cup lid or pour the remaining solution into a proper storage container.
- d. Rinse the Cup (35) under warm running water until clean.
- e. Fill the Cup (35) to 2oz (50ml) with MaxiMist MaxiClean Organic Spray Gun Cleaner. Reconnect spray gun to Air Hose (44). Turn on the motor unit. Direct the spray gun to a safe area and spray the spray gun cleaner through the spray gun until the Cup (35) is empty.
- f. Turn off the motor unit. Disconnect the spray gun. Unscrew the Cup (35).
- g. Wipe all exposed areas dry.

#### 4. Maintenance

- h. Unscrew and remove the Air Cap Ring (1-1). Rinse the threads under warm running water. Wipe, clean the threads and dry.
- i. Remove the Air Cap (1-2). Rinse under warm running water. Wipe, clean and dry. Apply 2 drops of Gun Lube (43) to the threads before reinstalling the Air Cap (1-2).
- j. Reinstall the pieces you just removed by reversing the removal procedure. Your spray gun should be ready for the next use. The Fluid Nozzle (2) can be removed for additional cleaning if necessary. Removal of the Fluid Nozzle (2) is not necessary on a daily basis. You should however remove it once a week and rinse under warm running water.
- k. To remove the Needle Assembly (20) unscrew the Fluid Adjusting Knob (22) using the small Spanner/Wrench (42) provided in the spares pack. Remove the spring (21) and gently slide out the Needle Assembly (20). Rinse under warm running water, clean and dry. Reinstall reversing the removal procedure.

Gun - Lifetime Limited Warranty  
Turbine – 1 year Warranty Against Failure

This machine and equipment is GUARANTEED by MaxiMist Spray Tanning Systems for a total period of TWELVE MONTHS from the ORIGINAL date of purchase by the ORIGINAL PURCHASER. Proof of purchase to be included and all SHIPPING CHARGES on returns are to be pre-paid. Client is responsible for shipping both the return and the replacement unit.

MaxiMist Spray Tanning Systems upon examination of the machine/equipment will replace or repair at their discretion any defects in material or workmanship.

This WARRANTY does NOT include: misuse, damage, neglect, alterations, disassembled equipment or modifications, lack of maintenance, cleaning, water damage to electrical parts and INCORRECT VOLTAGE CONNECTION. This WARRANTY is in lieu of all other express warranties, any WARRANTY implied by law, including but not limited to implied warranties of merchantability or fitness, is excluded to the maximum extent permitted by law and, if not excludable, it is limited to the duration of the express warranty. No representative or person is authorized to extend this warranty or to create for MaxiMist Spray Tanning Systems any other liability in connection with the sale of any MaxiMist Spray Tanning Systems product. MaxiMist Spray Tanning Systems shall not be liable for any consequential, incidental, or special damages of any kind directly or indirectly resulting from breach of any express or implied warranty. Some States do allow the exclusion of limitation of incidental or consequential damages or limitations on the length of any warranty so that the above limitations and exclusions may not apply to you; however, to the maximum extent permitted under applicable law, the only rights and remedies shall be to obtain a replacement for any defective product. This warranty gives you specific legal rights and you may also have other rights which vary from state to state and country to country.

What's covered?

Turbine Motor – 12 months  
Power Switch – 12 months  
Gun Body, Tip and Needle Assembly – lifetime  
Cups and Hose – 90 days

Normal wear and tear parts are not covered

These include:

Turbine Filter  
Gland Seals  
Gaskets  
Springs

**YOU HAVE A COMPLETE SPARE PARTS PACKAGE INCLUDED WITH ALL NECESSARY  
NORMAL REPLACEMENT PARTS, DO NOT LOSE THIS PACKAGE!**

In the event you experience a problem with your unit system please contact our support team  
between 8.00am and 5.00pm EST  
at 727 834 9435 or email us at support@maximist.co.

MaxiMist Spray Tanning Systems 11920 31st Ct N St.Petersburg, Fla 33716 727-834-9435