

MAXIMIST™

HVLP TANNING SYSTEM



DO NOT USE EQUIPMENT BEFORE READING THIS MANUAL

This manual contains important warnings and instructions. Please read these instructions carefully and keep for your reference.

MaxiMist™ Instruction Manual

Congratulations on purchasing MaxiMist™ Spray Tanning System. This product has been specially designed to provide an efficient application of tanning solution products.

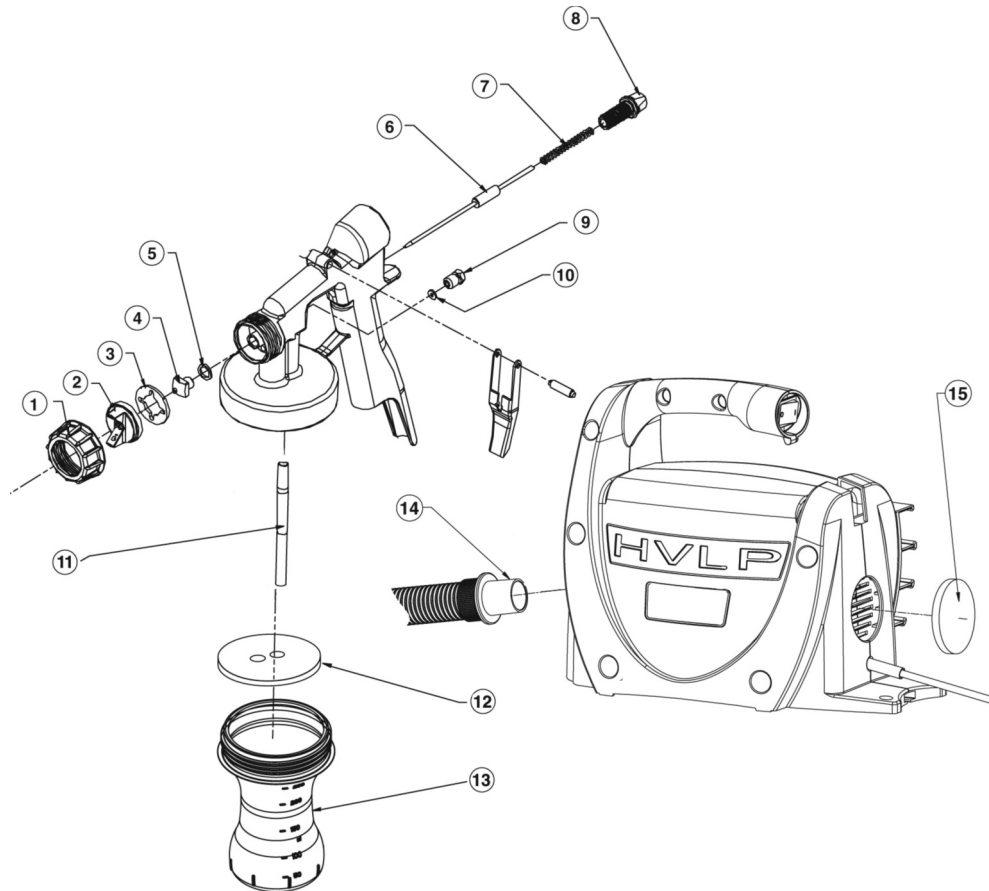
Take a minute to read and understand how to operate your new MaxiMist™ system and you will be able to provide the perfect flawless tan with every application.

Your MaxiMist™ is packaged with the following:

1. MaxiMist™ turbo powered spray unit.
2. MaxiMist™ air hose
3. Spray gun
4. Instruction manual
5. Three spare containers
6. Spares pack

Prepare the spray gun

1. The MaxiMist™ exploded diagram and parts list



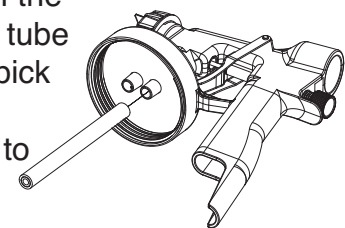
Description

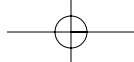
Description	Part No.
1. Air cap ring	L0215
2. Air cap	L0205
3. Spray direction plate	L0206
4. Solution nozzle 0.6mm	L0284
5. Solution nozzle gasket	L0211
6. Solution needle 0.6mm	L0283
7. Spring	L0216
8. Solution flow screw	L0210
9. Gland nut	L0208
10. Gland seal	L0272
11. Pick-up tube	L0947
12. Cup seal	L0335
13. Cup (clear)	L0909
14. Hose assembly	L1342
15. Filter	L0290
16. Cup lid (not shown)	WD0257

Spares Pack

Spares Pack	Part No.
1. Solution nozzle seal	L0211 x1
2. Gland seal	L0272 x1
3. HVLP spring	L0216 x1
4. HVLP paint container seal	L0335 x3
5. Filter	L0290 x1
6. 250ml cup	L0909 x3
7. Pick-up tube	L0947
8. Cup lid	WD0257 x3

Position the pick-up tube on the pick up port closest to the gun handle

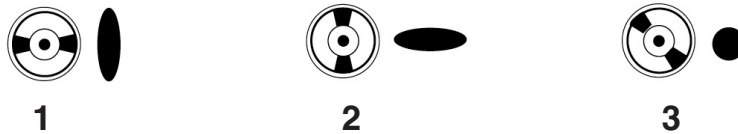




1. Follow the diagram to prepare the MaxiMist spray gun

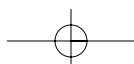
- a. Unscrew the plastic cup from the spray gun. Pour tanning solution into the cup. Do not fill to more than 1/2 full. Leaking may occur.
- b. Carefully screw the cup back onto the main body of the spray gun.
- c. Screw the cup on firmly.
- d. Locate the air cap (#2) on the spray gun diagram. Slightly turn the air cap ring (#1) anti or counter clockwise to loosen the air cap. Notice that you can now rotate the air cap freely.
- e. Look at spray gun patterns diagram below. Note the position of the air cap and the direction of the spray pattern. Pattern 1 is for spraying across from side to side. Pattern 2 is for spraying up and down. Pattern 3 will produce a spot or circle. Patterns 1 and 2 are the most common positions for applying tanning solutions.
- f. Turn the air cap (#2) to the position you want. Turn the air cap ring (#1) clockwise to lock the air cap in place.

Spray gun patterns



1. Spraying across from side to side.
2. Spraying up and down.
3. Spraying in a spot or circle. (Not used in spray tanning)

2. **Next, position the MaxiMist™ turbo unit as far away as practical and possible from the area where you will be spraying.**
3. **Attach the hose to the spray gun and the turbo unit, simply insert with light pressure but ensure a tight fit.**



2. Adjusting the spray gun



- a. Locate the solution flow screw (#8) on the spray gun diagram.
- b. Turning the solution flow screw (#8) clockwise reduces and will eventually stop the flow of solution. Start by turning the solution flow screw clockwise until you can no longer turn the knob, the gun is now “closed inside”.
- c. Turning the solution flow screw anti or counter clockwise will increase the flow of solution. With the solution flow screw “closed” proceed to below.
- d. In general, 1/4 - 3/4 full turn from the fully closed position will provide a good solution flow. You may find that you want more or less solution. You can adjust the solution flow screw to your desired setting. Your goal is to adjust the solution flow screw so you obtain a 4” (10cm) wide spray pattern spraying 4” (10cm) away from your target. Test on a white/light towel, proper adjustments will greatly improve application. Proper adjustment will make the difference between a great application or a poor one.
- e. NOTE: Opening the solution flow screw more than 3 turns will not increase the solution flow and will in fact decrease the efficiency of your spray gun.
- f. In general, hold the spray gun 4” (10cm) from the person being sprayed. Moving the spray gun back will increase the size of the mist pattern. Moving the spray gun closer will decrease the size of the mist pattern. The further away you hold the spray gun, the more you will need to increase the solution flow thus causing abnormal amounts of air borne solution (overspray).
- g. Holding the spray gun closer to the person being sprayed along with a minimum flow of solution will provide the best results, no streaks or running solution and virtually no mist in the spray area.
- h. Be sure to move the spray gun at a slow (not too slow), steady speed keeping the distance of the spray gun the same throughout the application. This will ensure perfect results. It is actually very easy. Practice a few times and you will be an expert.
- i. It is best to hold the spray gun in a vertical position when spraying. If you want to change the direction of the mist pattern, rotate the position of the air cap rather than turning the spray gun on its side.

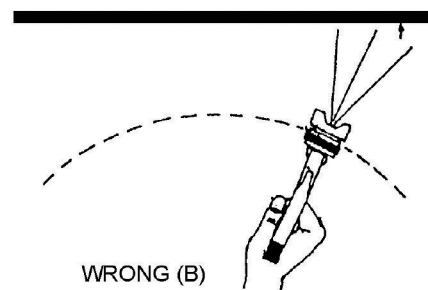
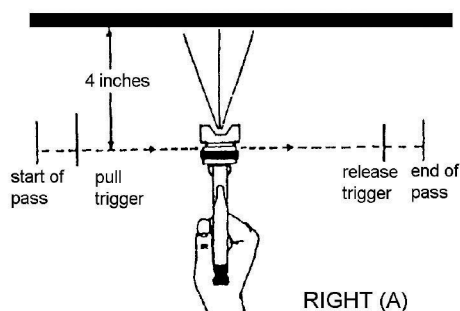
3. Using the spray gun

- j. Always hold or store the spray gun in a vertical position. **DO NOT ROCK OR TIP**

You are now ready to begin spraying.

- a. The ON/OFF switch is located on the turbine unit. Turn it on. You will hear a sound similar to a vacuum cleaner. You may also notice that air is now blowing out of the front of the spray gun. This is correct. Air will continually flow from the air cap of the spray gun as long as the MaxiMist turbo unit is running and the air hose is connected.
- b. Open the solution flow screw as described above.
- c. Set the spray pattern you wish to use by adjusting the air cap to the desired position. Refer to the spray pattern diagram.
- d. Direct the spray gun to the area of the body that you want to start spraying.
- e. Pull back on the trigger and move the spray gun as noted in the diagram below. Do not wave OR TILT the spray gun back and forth in front of your client by bending your wrist. Rather, keep your wrist straight and move your entire arm. Movement should be steady, even and deliberate, keeping your distance the same at all times.

PROPER SPRAYING TECHNIQUE (Remember, NO TILTING, STAY LEVEL)



4. Maintenance

1. Air hose

- a. Wipe the air hose daily with a damp cloth and store in a clean dry place.

2. Spray gun

- a. It is important to clean your spray gun daily.
- b. At the end of the day or when the equipment will not be used any more, disconnect the spray gun from the air hose.
- c. Carefully unscrew the cup. If there is remaining solution, either close the cup with a cup lid, or pour the remaining solution into a proper storage container.
- d. Rinse the cup under warm running water until clean.
- e. Fill the cup to 50ml with water. Reconnect spray gun to air hose. Turn on the MaxiMist™ turbo unit. Direct the spray gun to a safe area and spray the clean warm water through the spray gun until the cup is empty.
- f. Turn off the turbo unit. Disconnect the spray gun. Unscrew the cup.
- g. Wipe all exposed areas dry.
- h. Unscrew and remove the air cap ring (#1). Rinse the threads under warm running water. Wipe, clean the threads and dry.
- i. Remove the air cap (#2). Rinse under warm running water. Wipe, clean and dry.
- j. If necessary, remove air distributor plate (#3). Rinse under warm running water. Reinstall the three pieces you just removed by reversing the removal procedure. Your spray gun should be ready for the next use. The solution nozzle (#4) can be removed for additional cleaning if necessary. Be careful. There is a solution nozzle gasket (#5) around the thread of the solution nozzle. Be sure to reinstall or leakage will occur. Removal of the solution nozzle is not necessary on a daily basis. You should however remove it once a week and rinse under running water. The solution nozzle can be easily removed with an adjustable wrench or spanner. Place the tip of your adjustable wrench or spanner on the two flat areas of the nozzle and twist anti or counter clockwise.
- k. The solution needle (#6) can also be removed for additional maintenance. To remove turn the solution flow screw anti or counter clockwise until it comes out of the spray gun. Be careful when removing the solution flow screw as there is a small spring (#7) around the needle. Do not lose it. This is important to the operation of spray gun. Set the spring aside and pull the trigger all the way back until you can grab the needle with your finger tips. Pull the needle out from the back of the spray gun. Once removed, rinse under warm running water, clean and dry. Reinstall reversing the removal procedure.

NOTE: Occasionally it is necessary to lubricate the needle (#6) where it slides through the gland nut (#9). Simply rub a few drops of spray gun lube around the needle shaft and reinsert into the back of spray gun.

Turbo unit air filter clean weekly

It is VERY important to allow the turbine motor to breathe freely; clogged and dirty filters prevent this and will cause your turbo unit to over heat and burn out prematurely. Locate the filter (#15) on the diagram, remove, wash out with warm water and simply replace.

Speedy Spray MaxiMist™ 12 Month Limited Warranty

This machine and equipment is **WARRANTED** by Spray Tan Direct for a total period of **TWELVE MONTHS** from the **ORIGINAL** date of purchase by the **ORIGINAL PURCHASER**. Proof of purchase to be included and all **SHIPPING CHARGES** on returns are to be pre-paid. Client responsible for shipping both the return and the replacement unit.

Spray Tan Direct upon examination of the machine/equipment will replace or repair at their discretion any defects in material or workmanship.

This **WARRANTY** does **NOT** include: misuse, damage, neglect, alterations, disassembled equipment or modifications, lack of maintenance, cleaning, water damage to electrical parts and **INCORRECT VOLTAGE CONNECTION**. This **WARRANTY** is in lieu of all other express warranties, any **WARRANTY** implied by law, including but not limited to implied warranties of merchantability or fitness, is excluded to the maximum extent permitted by law and, if not excludable, it is limited to the duration of the express Warranty. No representative or person is authorized to extend this Warranty or to create for Spray Tan Direct. Any other liability in connection with the sale of any Spray Tan Direct product. Spray Tan Direct shall not be liable for any consequential, incidental, or special damages of any kind directly or indirectly resulting from breach of any express or implied Warranty. Some States do allow the exclusion of limitation of incidental or consequential damages or limitations on the length of any Warranty so that the above limitations and exclusions may not apply to you; however, to the maximum extent permitted under applicable law, the only rights and remedies shall be to obtain a replacement for any defective product. This Warranty gives you specific legal rights and you may also have other rights which vary from state to state and country to country.

What's covered?

1. The turbine motor for 12 months.
2. The power switch on the turbine unit
3. Leaking cups or spray guns that leak and the solution cup

**PLEASE CONTACT YOUR DEALER FOR ALL
WARRANTY AND SUPPORT ISSUES**

**For a great application technique visit
www.hvlptanning.com**

Spray Tan Direct
11920 31st Ct N
St.Petersburg, Fla 33716
727-834-9435